

Main Features

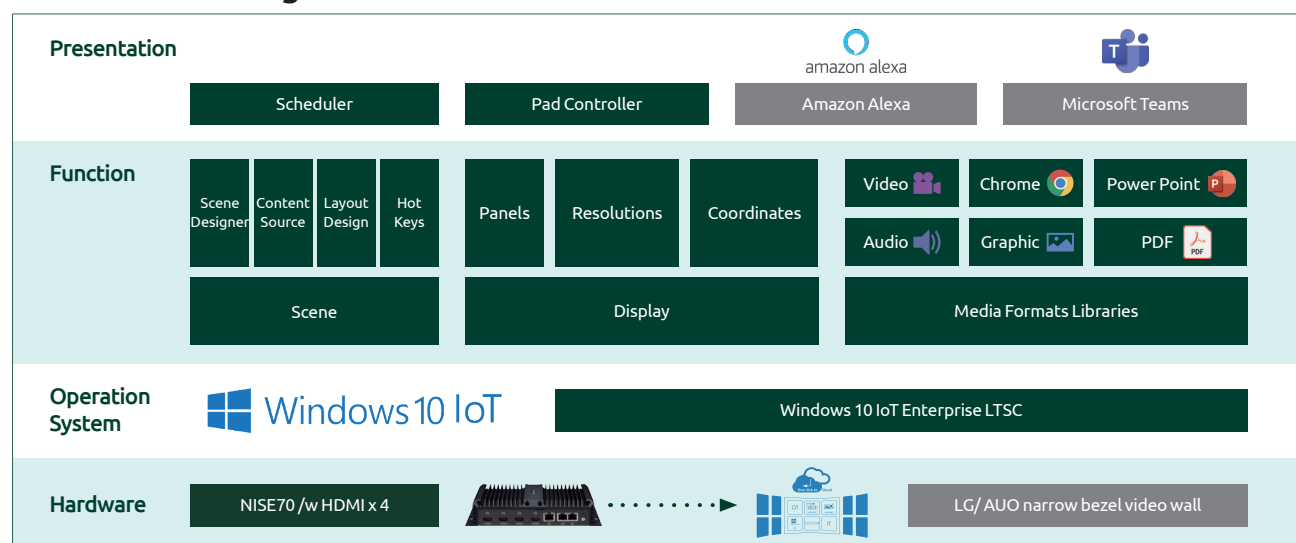
- Support from 2×2 to 4×4 Displays
- Pixel to Pixel Resolution up to 16K
- Contents support: Chrome/PowerPoints/4K video...etc. (Notes 1)
- No KVM switching
- Customize Hot Key
- Flexible Layout Design
- Scene Designer: Multiple Scenes Editing
- Pad Controller, Microsoft Teams & Amazon Alexa support (Notes 2)

Product Overview

NexWall is a video wall player for designing an interactive Enterprise War Room. It can support from 2×2 to 4×4 displays and up to 16K resolutions. User can predefine layouts for each application contents and then arrange story by various scenes. Then present it by air mouse or tablet to show all kind of systems in one place to enable decision maker get more and real time messages.

The NexWall Scene Designer allows users to design the presentation via NexWall Console for a single player. This handy tool gives users the freedom and flexibility to add, modify and control different types of rich media files from pictures, video files, web to presentation.

Software Building Blocks

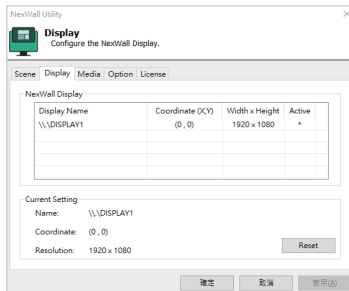


NOTES:

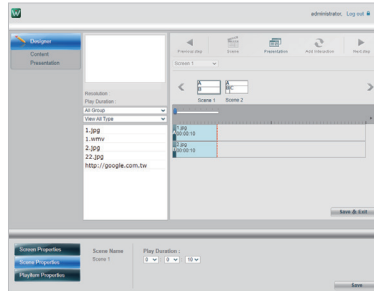
- PowerPoint, Word, Excel are supported by project base, please contact sales for more information.
- Pad Controller, Amazon Alexa, Microsoft Teams are supported by project base , please contact sales for more information.

Function & UI

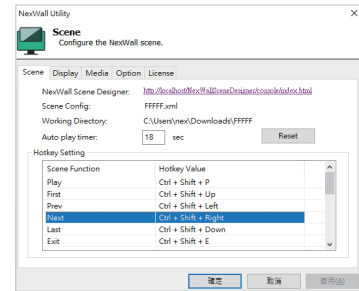
1. Display & Resolution Setting



2. Arrange Contents by Scene Designer



3. Customize Hotkey & Play



Specifications

NexWall	Features
Content Support	<ul style="list-style-type: none"> - Graphic: JPG, BMP, PNG, ICO, ICP, GIF, TIFF, WMF - Audio: MIDI, MPEG-1-Audio LayerII (MP2), mp3, SND, M4A, AAC, wav, wma, ogg, ra - Video: MPEG 1/2/4, AVI, WMV, DivX, XVID, VOB, MOV VC-1, H.264, rm, rmvb - Chrome: Web/URL content - Microsoft 365: PowerPoint, Word, Excel (By Project Support)
HotKey (Default)	<ul style="list-style-type: none"> - Play (Ctrl + Shift + P) - First (Ctrl + Shift + Up) - Prev (Ctrl + Shift + Left) - Next (Ctrl + Shift + Right) - Last (Ctrl + Shift + Down) - Exit (Ctrl + Shift + E) - Demo (Ctrl + Shift + D)
Scene Designer	<ul style="list-style-type: none"> - Content Source: To add new content files or manage the content files you previously created - Layout Design: To add new design presentation or manage the design presentation you previously created
Ordering Information	<ul style="list-style-type: none"> - NexWall Pro (P/N: 6014500177X01)

Support OS

- ♦ Windows 10 IoT Enterprise LTSC (64-bit)

Ordering Information

- ♦ NexWall Pro (P/N: 6014500177X01)